

Epigastric Abdominal Pain in Adult secondary to Gastric Duplication Cysts and Bifid Pancreas: An Uncommon Coexistence

Brenna Casey, DO¹, Himani Patel², James Garber, MD¹

1. Memorial Hospital University Medical Center, Savannah, GA
2. Mercer University School of Medicine, Savannah, GA

Disclosures

- None

- Case Vignette
 - Presentation
 - Differential Diagnosis
 - Intervention
 - Findings
- Review of Topics
 - Duplication Cysts
 - Pancreatic Abnormalities
- Final Word

Case Vignette

- 29-year-old male with type 1 diabetes presented with chronic epigastric pain, early satiety, and nonbilious emesis.
 - CT imaging revealed a rare combination of a bifid pancreatic tail extending to the greater curvature of stomach and bilobed cystic structure
 - Differential diagnoses of pancreatic pseudocyst, gastric duplication cyst, or gastrointestinal stromal tumor.



Source: gross specimen of gastric duplication cysts and bifid pancreas

Pathology

A: Pancreas, ANTERIOR BIFID PANCREAS WITH LIKELY DUPLICATION CYSTS:

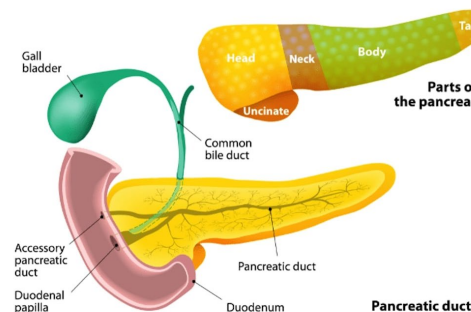
- Features consistent with enteric gastric duplication cysts with accessory pancreatic tissue present.
- Margins of resection negative for cystic structures.

Duplication Cysts

- Rare developmental anomalies, primarily in children, rarely adults
- Duplications occur anywhere along gastrointestinal tract
- Clinical manifestations: pain, vomiting, hematemesis, weight loss.
- Differential diagnoses: GISTs, neuroendocrine tumors, pancreatic heterotopia, pancreatic pseudocysts, neurogenic tumors, mesenteric cysts.
- Reporting cases crucial due to rarity for better understanding.

Anatomic Abnormalities of the Pancreas

- Most common variations include:
 - Pancreas divisum
 - Bifid pancreas
 - Annular pancrea
 - Ectopic pancreas
 - Pancreatic agenesis or hypoplasia
- Some anomalies can lead to clinical symptoms such as recurrent abdominal pain, nausea, vomiting, and recurrent pancreatitis.



This research was supported (in whole or in part) by HCA Healthcare and/or an HCA Healthcare affiliated entity. The views expressed in this publication represent those of the author(s) and do not necessarily represent the official views of HCA Healthcare or any of its affiliated entities.

<https://ezra.com/blog/the-pancreas-anatomy-and-functions>

Final Word

- Embryonic etiologies for abdominal symptoms are rare and should be considered in patient workups
- Documentation of rare cases will help further our understanding of their impacts on patients, approach to diagnosis and ultimately treatment

References

1. Leung PS. Overview of the pancreas. Adv Exp Med Biol. 2010;690:3-12. doi:10.1007/978-90-481-9060-7_1
2. Li, Y., Li, C., Wu, H. et al. Clinical features of gastric duplications: evidence from primary case reports and published data. Orphanet J Rare Dis 16, 368 (2021). <https://doi.org/10.1186/s13023-021-01992-1>
3. Liu R, Adler DG. Duplication cysts: Diagnosis, management, and the role of endoscopic ultrasound. Endosc Ultrasound. 2014;3(3):152-160. doi:10.4103/2303-9027.138783
4. Skandalakis LJ, Rowe JS Jr, Gray SW, Skandalakis JE. Surgical embryology and anatomy of the pancreas. Surg Clin North Am. 1993;73(4):661-697. doi:10.1016/s0039-6109(16)46080-9
5. Vassallo L, Fasciano M, Lingua G, Marchisio FG, Versiero M, Talenti A. Pancreas bifidum: an extremely rare cause of acute pancreatitis. Radiol Case Rep. 2022;17(10):3490-3494. Published 2022 Jul 27. doi:10.1016/j.radcr.2022.06.089